

What is an Invertebrate?

An invertebrate is an organism without a true backbone. This means that it has neither a cartilage or bony spine. The majority of invertebrates instead rely on an exoskeleton to protect their vital organs.

Quick Invertebrate Facts

- They may be aquatic or terrestrial, native or non-native, herbivorous or predatory
- There are over 1.3 million identified species of invertebrates, roughly 1 million of those are classified as insects
- Did you know? The world's insect population has decreased by at least 45% since 1980!

Invertebrates at Lakeshore State Park rely on the proximity to Lake Michigan, and our plentiful prairie plants for habitat and sustenance. While walking through the park, keep an eye out on the prairie forbs (flowering plants) for pollinators, the leaves of grasses and stems of forbs for invertebrates eating, and watch where you step-you may crush a crayfish claw or two! The gulls feast on both the native and non-native species of crayfish, biting their claws off before swallowing the rest whole. If you see something that looks like a mosquito, don't fret-at Lakeshore State Park we have non-biting midge flies, but no mosquitoes!

Hundreds of Invertebrates

The list provided here is by no means exhaustive. There are hundreds of different invertebrates that reside and migrate through Lakeshore State Park. If you find one that is particularly interesting or rare, please let us know! If you need help identifying it, our naturalists can also assist with this task.

Contact Us

If you have any questions about your visit or if you would like to share your experience or photos with us, please feel free to contact us or visit our Facebook page.

Park Manager
Angela Vickio

414-274-4281 office/414-750-1237 cell
Angela.Vickio@wisconsin.gov

Facebook

[https://www.facebook.com/
LakeshoreStateParkMKE](https://www.facebook.com/LakeshoreStateParkMKE)

The Friends of Lakeshore State Park partners with the WDNR and the community to establish LSP as Milwaukee's premier urban oasis. The Friends is a non-profit organization dedicated to supporting the park and its partners by raising funds for educational programming, events and infrastructure, as well as providing volunteers to enhance park services. To donate to this organization, please see the Friends website at FriendsLSP.org



500 N. HARBOR DR. MILWAUKEE, WI 53233

Invertebrates of Lakeshore State Park



Lakeshore State Park is host to a variety of pollinators and other invertebrates. The diversity of the prairies allow insects to thrive here throughout the growing season, and they provide an overwintering habitat for species that do not migrate. These animals may be creepy crawlies, but check them out-they are vital to our ecosystem and can be beautiful and interesting!



Common Invertebrates of Lakeshore State Park

Dragonflies and Damselflies

Familiar
Bluet



Green
Darter



Black
Saddlebag

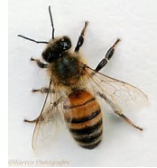


Bees, Hornets and Wasps

Eastern
Carpenter



Honey
Bee



Eastern
Yellowjacket



Spiders

Running
Crab



Dark
Fishing



Long Jawed
Orbweaver



Beetles

Milkweed
Beetle



Milkweed
Bug



Calligrapha
Beetle



Spotted
Cucumber Beetle



Lady
Beetle



Asian
Beetle (NN)



Shield
Bug



Lightning
Bug



Goldenrod
Soldier Beetle



Common
Eastern
Bumblebee



Golden
Northern
Bumblebee



Green Metallic
Bee
(*Agapostemon splendens*)



Mud
Dauber



Great Black
Wasp



Bald Faced
Hornet



Other Terrestrial Invertebrates

Midge
Fly



Green
Lacewing



Praying
Mantis



Jagged Ambush
Bug



Helophilus
Syrphid Fly



Syrphus
Syrphid Fly



Butterflies and Moths

Monarch
Butterfly



Webworm
Moth



Cabbage
White Butterfly



Black
Swallowtail
Butterfly



Eastern Tiger
Swallowtail
Butterfly



Common
Buckeye
Butterfly



Grasshoppers, Crickets and Leafhoppers

Carolina
Locust



Green Striped
Grasshopper



Red Legged
Grasshopper



Candystriped
Leafhopper



Field
Cricket



Hummingbird
Clearwing Moth



Aquatic Macroinvertebrates

Virile
Crayfish



Rusty
Crayfish (NN)



Pond Scud
(Amphipod)



Zebra
Mussel (NN)



Quagga
Mussel (NN)



Aquatic Sow
Bug (Isopod)



NN=Non-Native to Wisconsin