

## Park Rules

- Protect our prairies by **always walking on paved, mown or mulched paths.**
- For the safety of our wildlife, park guests and your pet, **always keep dogs on a leash and clean up after them.** Bags for cleanup can be found at the North and South entrances to the park.
- Prevent fire damage to turf and prairies by **leaving your grills at home.** Both gas and charcoal grills are prohibited.
- Keep our park beautiful by **disposing of your garbage**—preferably by taking it with you when you leave—or by placing it in one of the garbage cans at either entrance.
- Stay safe by **not swimming.** Pebble beach has no lifeguard and strong currents exist.
- Bicyclists can be safe and kind by verbally **alerting others that they are passing on the left.**
- Keep a safe speed. **Motorized vehicles including segways, hoverboards and electric scooters are prohibited** (except for ADA mobility devices and maintenance/security vehicles).
- Keep them wild! **Please do not feed our wildlife.** Bread is very harmful to birds' digestion.
- Stay alert. Due to the vast open water, **alcohol consumption is prohibited in the park.**



## Contact Us

If you have any questions about your visit, would like to share your experience or photos with us, host a **special event** or **photo shoot** at the property, please feel free to contact us or visit our Facebook page.

### Park Manager

Elaine Zautke

414-274-4281 office/

[Elaine.Zautke@wisconsin.gov](mailto:Elaine.Zautke@wisconsin.gov)

### Facebook

[www.facebook.com/LakeshoreStateParkMKE](https://www.facebook.com/LakeshoreStateParkMKE)

If you see something, say something!  
**24/7 DNR Tip Line: 1-800-847-9367**



providing volunteers to enhance park services.

The Friends group is currently fundraising to build a Visitor and Education Center. Help make it a reality! To donate to this organization, or become a Friend of Lakeshore State Park yourself, please see the Friends website at [FriendsLSP.org](http://FriendsLSP.org)



500 N. HARBOR DR. MILWAUKEE, WI 53233

## Welcome to Lakeshore State Park

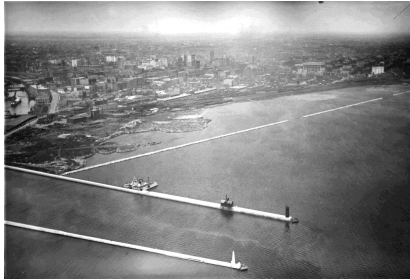


Lakeshore State Park is Wisconsin's only urban state park. Whether you are biking our paved trails, kayaking in our Quiet Water Basin, fishing off our pier, hiking through the prairie enjoying a meal at our picnic tables, or mooring at one of our boat slips, you'll find amazing views anywhere you look. In addition to Lake Michigan and the Milwaukee skyline, sights to be seen at Lakeshore State Park include wetland, short grass and tall grass prairies, native plant gardens and freshwater habitats. Entry and parking are free.



# Park History

*Milwaukee's Lakefront has changed dramatically since the city was established, being constantly filled in with earth to expand its industrial capacity.*



► Taken in 1965, this photo reveals Summerfest's past as Maitland Air Strip and the Nike Missile site. The Municipal Passenger Pier jutting into the water just south of the War Memorial is the present day location of Discovery World.



Governor Tommy Thompson announced plans for Lakeshore State Park in 1998.



◄ The pierhead light at the South Entrance to the park was completed in 1906.



◄ In the late 1980s, the debris from MMSD's Deep Tunnel Project in was placed in Milwaukee Harbor to create Harbor Island. ▼



◄ Built with additional debris from MMSD, the park opened in 2007.

# Lakeshore State Park Today



► As part of the Lake Michigan Flyway, Lakeshore State Park hosts over 70 species of indigenous and migratory birds throughout the year. You'll find a variety of birds here in every season!



◄ The park's ongoing native prairie restoration projects provide pollinators and other animals with abundant food and shelter throughout the year.

► Lakeshore State Park has over two miles of paved and unpaved trails, making it the perfect place to run, walk, hike, bike and rollerblade.



◄ We host guided hikes, workshops, fishing clinics and school field trips spring through fall.

# Recreational Opportunities



• **Fish** along the Milwaukee Harbor from our accessible fishing pier, our fishing steps or the shoreline of our Quiet Water Basin. Be sure to dispose of fishing line in our monofilament canisters.

• **Hike** our paved, mown and wood-chip mulched paths. Protect our native plants by staying on trails and mowed turf at all times.

• **Bike or Skate** our paved pathways that connect the Hank Aaron State Trail with the Oak Leaf Trail. Bike rentals are available in front of Discovery World.

• **Picnic** on the lawn or at tables located throughout the park. No alcohol or grills are allowed in the park.

• **Watch** our resident and migratory birds and waterfowl at Pebble Beach.

• **Play** tag or kick the ball around the Big Lawn.

• **Observe** native Wisconsin prairie flowers and grasses in our Demonstration Gardens by the North Entrance.

• **Participate** in a guided hike or workshop with a park Naturalist.

• **Explore the park from the water** by renting a paddleboat or paddlebike, or hike your kayak or paddleboard in and launch from the Pebble Beach.

• **Discover** ancient marine fossils in the dolomite rocks lining the shore.

• **Dock** your boat at our marina while you explore the Lakefront.